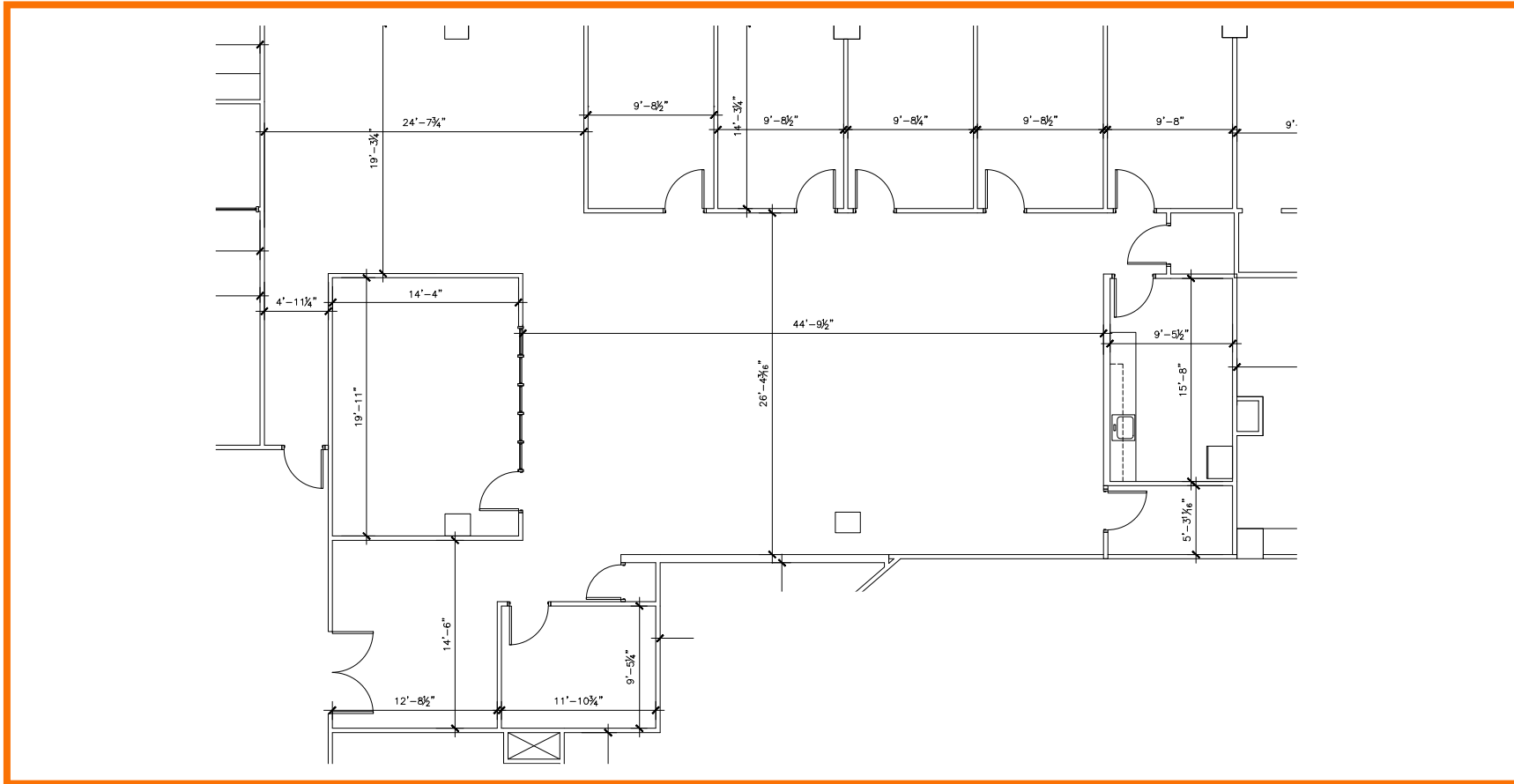


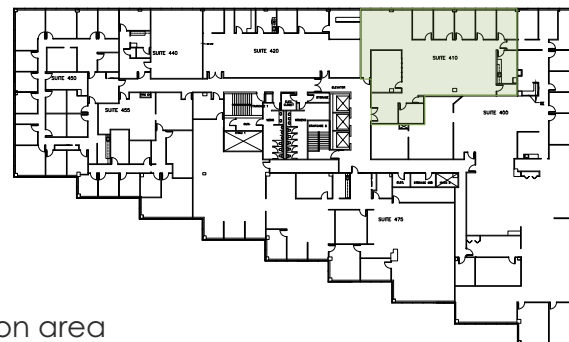
FLOOR PLANS Fourth Floor

1011 East Touhy



Suite 410 | SF: 4,183

- Fully built-out office suite in excellent condition
- Brand new carpet, paint, LED lighting, and updated breakroom cabinetry
- Bright, modern layout with a strong mix of private offices and large central open workspace
- Glass-front entrance directly off the elevator lobby
- Large conference room plus soft seating/collaboration area
- Full breakroom/kitchen
- Furniture available, including workstations and related pieces



For information contact:
IGNACIO FELLER

Commercial Real Estate Director
(847) 777-9513
ifeller@ohareoffices.com
OhareOffices.com