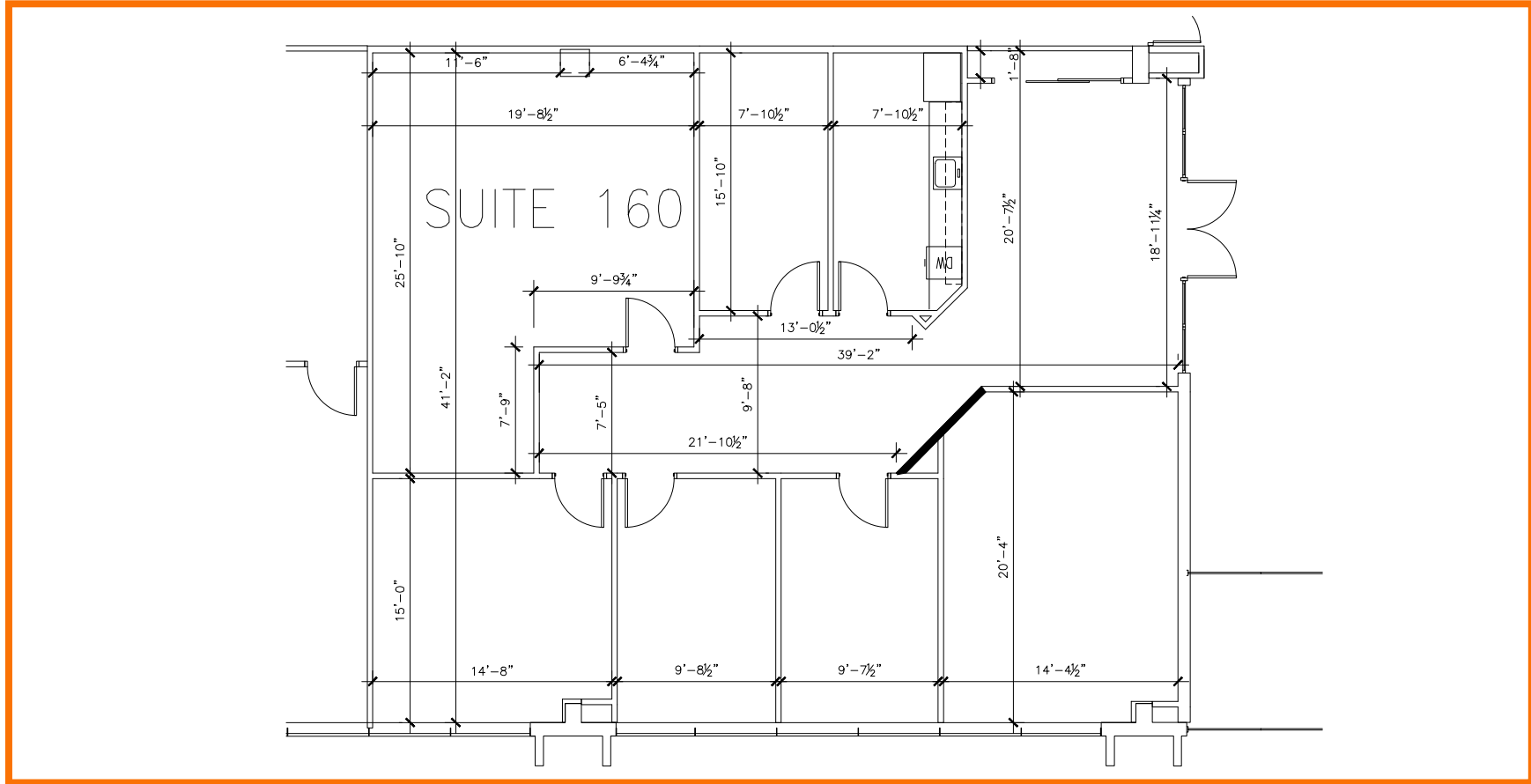


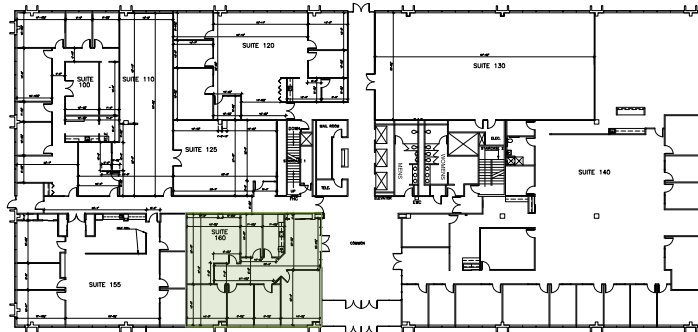
FLOOR PLANS First Floor

1111 East Touhy



Suite 160 | SF: 2,420

- Fully built-out standard office layout with brand new carpet, fresh paint, and upgraded LED lighting
- Glass-front entry with reception directly off the main lobby
- Breakroom/kitchenette



For information contact:
IGNACIO FELLER
Commercial Real Estate Director
(847) 777-9513
ifeller@ohareoffices.com
OhareOffices.com